

# Cable Assemblies

Precision Power Cable Assemblies are designed to provide reliable connectivity between Precision FTTx UPS and Optical Network Terminals (ONT).

## Bulk Telemetry Cable

PRxCT

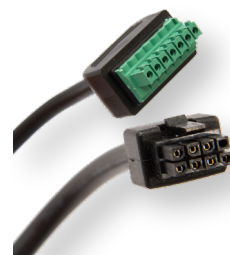
- ✓ Available in 500ft and 1,000ft
- ✓ 16AWG/2C, 24AWG/5C
- ✓ Compatible with all Residential ONTs up to 100'
- ✓ UL Approved
- ✓ UV Rated Indoor/Outdoor Cable
- ✓ Custom Lengths Available Upon Request
- ✓ Direct Replacement to Calix Type II Bulk Cable
- ✓ Insulation Color 16AWG (RED/BLACK), 24AWG (GRN/BLU/SLT/BRN/OR)



## Adtran/Calix/Other Cable Assembly

PP7P8M-B-x

- ✓ Termination A – 7-pin Connector (3.5mm pitch)
- ✓ Termination B – 8-pin connector (2 x 4 block)
- ✓ Alarm Pin Set configured for all indoor Adtran and Calix ONTs with 8-pin connector input option (2 x 4 block)
- ✓ Standard Stock on 1.5ft, 4ft, 6ft, 8ft and 10ft lengths
- ✓ Custom Lengths available upon request



## Calix 803/SmartRG/ Arris/Other Cable Assembly

PP7P5525-x

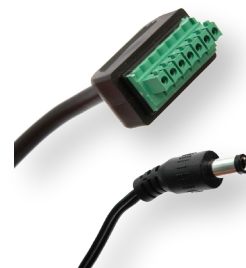
- ✓ Termination A – 7-pin Connector (3.5mm pitch)
- ✓ Termination B – Barrel connector, OD = 5.5mm x ID = 2.5mm
- ✓ Direct Power 12Vdc Power Only Connector for use with Calix 803, 844E, Arris Modems, SmartRG Access Points and many other CPE devices
- ✓ Standard Stock on 2ft and 8ft lengths
- ✓ Custom Lengths available upon request



## ADTRAN 602x/621i/622 &

PP7P5521-x

- ✓ Termination A – 7-pin Connector (3.5mm pitch)
- ✓ Termination B – Barrel connector, OD = 5.5mm x ID = 2.1mm
- ✓ Direct Power 12Vdc Power Only Connector for use with ADTRAN 602x/621i/622 ONTs and many other CPE devices
- ✓ Standard Stock on 2ft and 8ft lengths
- ✓ Custom Lengths available upon request



# PRECISION GROUP

# Cable Assemblies

Precision Power Cable Assemblies are designed to provide reliable connectivity between Precision FTTx UPS and Optical Network Terminals (ONT).

## Calix 716I-GE Cable Assembly

PP7PDIN-x



- ✓ Termination A – 7-pin Connector (3.5mm pitch)
- ✓ Termination B – 9-pin DIN connector
- ✓ Alarm Pin Set configured for Calix 716GE-I and Calix 836GE ONT
- ✓ Standard Stock on 2ft, 4ft and 8ft lengths
- ✓ Custom Lengths available upon request

## ONT + Router Split Cable Assembly

PP7P8M55-Y



- ✓ Termination A – 7-pin Connector (3.5mm pitch)
- ✓ Termination B – (O1) Barrel Connector, (O2) Barrel Connector
- ✓ Alarm Pin Set configured for all indoor Adtran and
- ✓ Calix ONTs with 8-pin connector input option (2 x 4 block)
- ✓ Standard Stock on 4ft lengths
- ✓ Custom lengths available upon request

## Dual Barrel and ONT + Router Split Cable

PP7P5525-Y-x



- ✓ Termination A – 7-pin Connector (3.5mm pitch)
- ✓ Termination B – (O1) Barrel Connector, (O2) Barrel Connector
- ✓ Standard Stock on 4ft lengths
- ✓ Custom lengths available upon request

## RFoG Cable Dongle

PP7P2F



- ✓ Termination A – 7-pin Connector (3.5mm pitch)
- ✓ Termination B – F connector
- ✓ Power Only for RFoG ONU devices
- ✓ 6 inches in length
- ✓ Custom Lengths available upon request

**PRECISION GROUP**

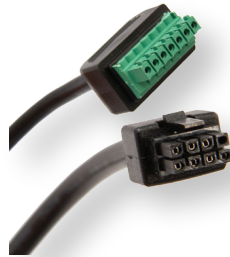
# Cable Assemblies

Precision Power Cable Assemblies are designed to provide reliable connectivity between Precision FTTx UPS and Optical Network Terminals (ONT).

## Zhone/Nokia/Other Cable Assembly

PP7P8M-A-x

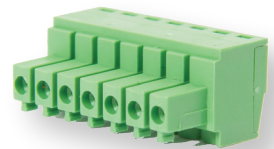
- ✓ Termination A – 7-pin Connector (3.5mm pitch)
- ✓ Termination B – 8-pin connector (2 x 4 block)
- ✓ Alarm Pin Set configured for all indoor Adtran and Calix ONTs with 8-pin connector input option (2 x 4 block)
- ✓ Standard Stock on 2ft, 6ft lengths
- ✓ Custom Lengths available upon request



## Termination Block

15EDK

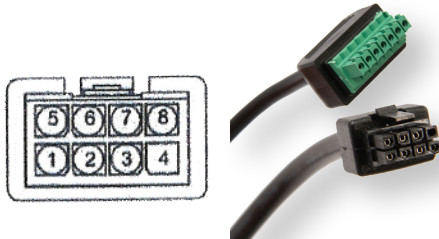
- ✓ Available in 2-pin, 3-pin, 4-pin, 7-pin termination blocks
- ✓ 3.5mm – 5.50mm pitch
- ✓ Replacement 7-pin Termination Blocks for Calix, Adtran and Zhone ONTs
- ✓ Replacement 7-pin Termination Blocks for Precision Power, CyberPower, Alpha BBU's
- ✓ Stock on all common FTTx Termination Blocks



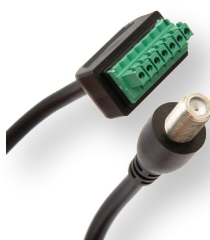
# CABLE CONFIGURATION GUIDE

ONT MANUFACTURER	ONT MODEL(S)	RECOMMENDED CABLE PN
CALIX	7XX SERIES OUTDOOR ONT	PR7CT-2-10 (1000ft), -05 (500ft) (BULK CABLE)
CALIX	716GE-I / 836GE	PP7PDIN-2, -4, -8, -10
CALIX	844GE / 812G / 813G / 819G / 822G / GP1100x / GP1101X / GS4227 / GS4227W (U6)	PP7P8M-B-1.5, -4, -6, -8, -10
CALIX	801G / 803G / 844E / GP1100x / GP1101X	PP7P5525-2, -8
ADTRAN	3XX / 4XX SERIES OUTDOOR ONT	PR7CT-2-10 (1000ft), -05 (500ft) (BULK CABLE)
ADTRAN	324 / 334 / 411 / 424	PP7P8M-B-1.5, -4, -6, -8, -10
ADTRAN	602x / 611 / 621 / 621i / 622v	PP7P5521-2 -8
NOKIA	24X SERIES INDOOR ONT	PP7P8M-A-2, -6
ZHONE	24XX SERIES INDOOR ONT	PP7P8M-A-2, -6 (BULK CABLE)
ZHONE	42XX SERIES OUTDOOR ONT	PR7CT-2-10 (1000ft), -05 (500ft)
ONU W/ F-CONNECTOR POWER INPUT		PP7P2F

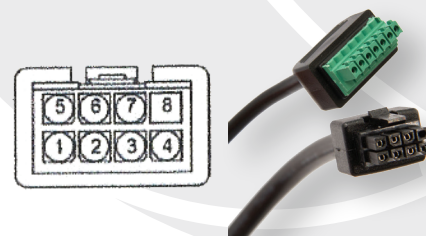
FINAL # IN EACH RECOMMENDED CABLE PN INDICATES LENGTH (FEET) OF CABLE  
EXAMPLE: PP7P8M-B-4= 4FT CABLE



PP7P8M-A-X



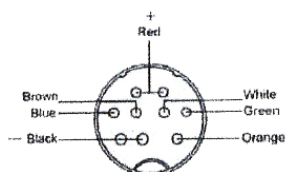
PP7P2F



PP7P8M-B-X



PR7CT-2-10 (1000ft), -05 (500ft)



PP7PDIN-X



PP7P5525-X  
PP7P5521-X

## PRECISION GROUP