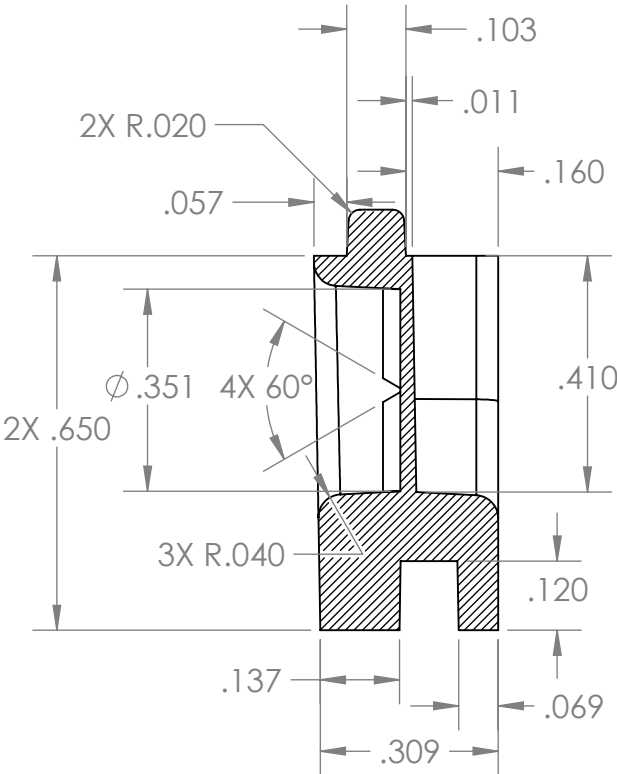
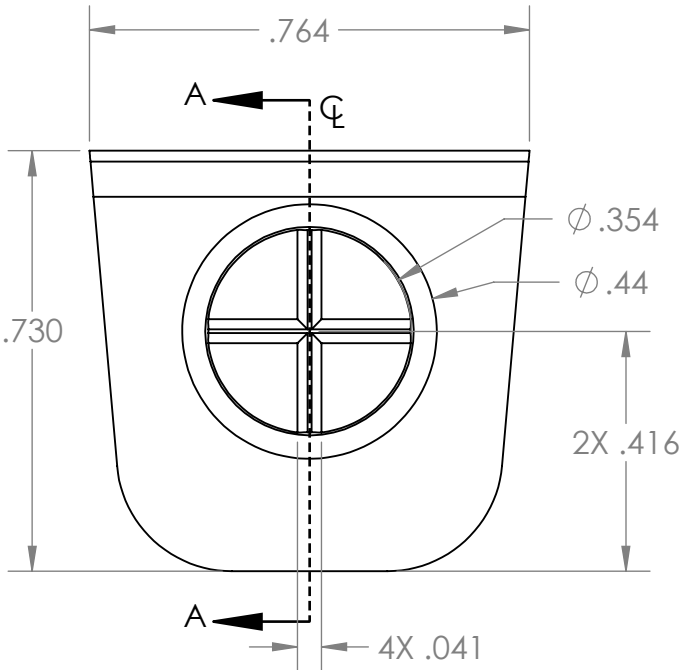
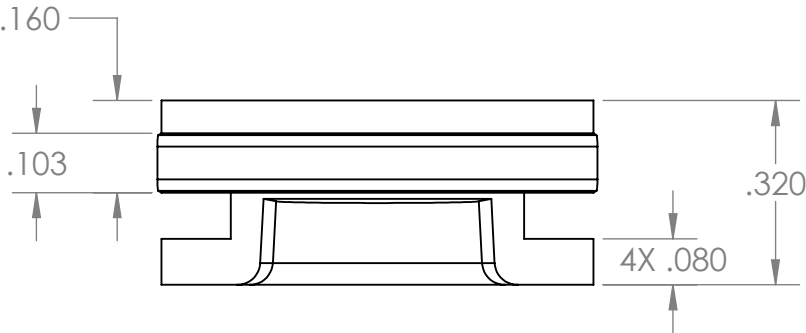


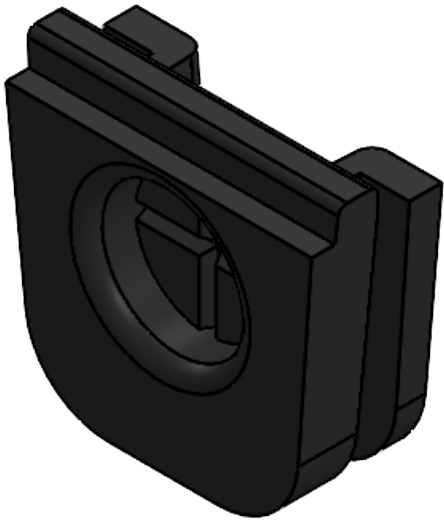
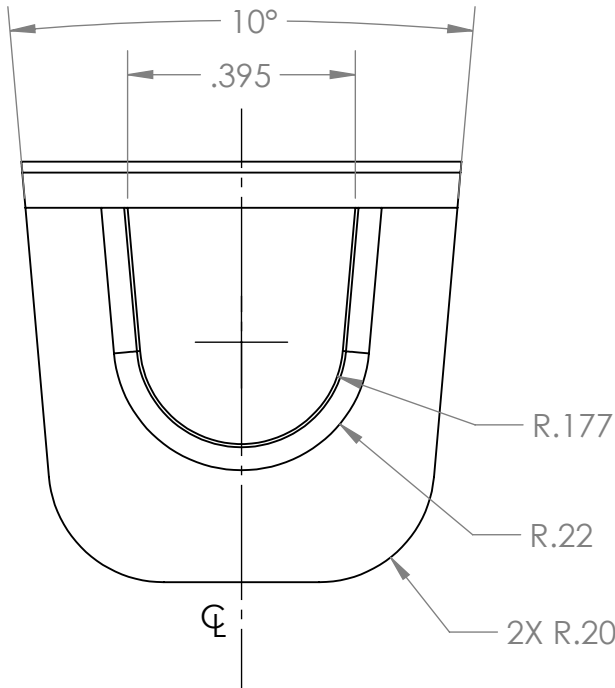
NOTES:

1. MATERIAL: EPDM, BLACK
2. VOLUME: 0.092 CUBIC INCHES
3. THIS IS A LIMITED DIMENSION DRAWING. MISSING DIMENSIONS ARE MODEL DRIVEN.
4. PARTS TO BE ADEQUATELY PACKED TO PREVENT DAMAGE DURING SHIPPING.
5. FLASH THICKNESS: .002" MAX. FLASH EXTENSION: .005" MAX. MISMATCH AT PARTING LINE: .002" MAX
6. TOOLING DESIGN TO BE SUBMITTED TO AND APPROVED BY ENGINEERING PRIOR TO CONSTRUCTION OF TOOLS.
7. SHARP EDGES AND CORNERS SHOWN TO BE UP TO .005" RADIUS.

REVISIONS					
ECO	REV.	DESCRIPTION	DATE	DRAWNBY	APPROVED
N/A	01	PRELIMINARY	07-26-21		
N/A	02	MATERIAL WAS CHANGED	6/26/2023	RG	



SECTION A-A



(ISOMETRIC FOR REFERENCE ONLY)

PROPRIETARY AND CONFIDENTIAL
THE INFORMATION CONTAINED IN THIS DRAWING IS THE SOLE PROPERTY OF PRECISION FIBER. ANY REPRODUCTION IN PART OR AS A WHOLE WITHOUT THE WRITTEN PERMISSION OF PRECISION FIBER IS PROHIBITED.

UNLESS OTHERWISE SPECIFIED:		NAME	DATE	PRECISION GROUP	
DIMENSIONS ARE IN INCHES		DRAWN			
TOLERANCES:		CHECKED			
FRACTIONAL ± 1/16		ENG APPR.			
ANGULAR: MACH ± .5 BEND ± 2		MFG APPR.			
ONE PLACE DECIMAL ± .050		Q.A.		TITLE: GROMMET, PORT, NID	
TWO PLACE DECIMAL ± .020		COMMENTS:			
THREE PLACE DECIMAL ± .010				SIZE B	DWG. NO. PMG-000-0005
INTERPRET GEOMETRIC TOLERANCING PER:				SCALE: 3:1	WEIGHT:
MATERIAL EPDM, BLACK					SHEET 1 OF 1
FINISH					
DO NOT SCALE DRAWING					
				REV 02	