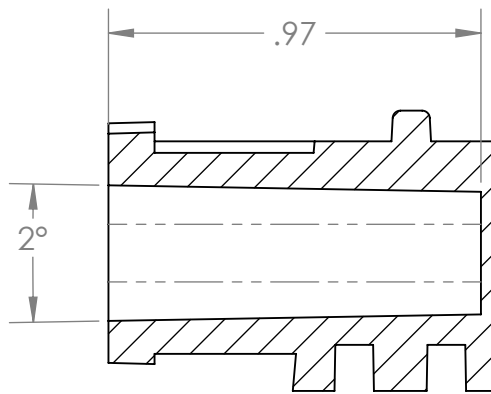
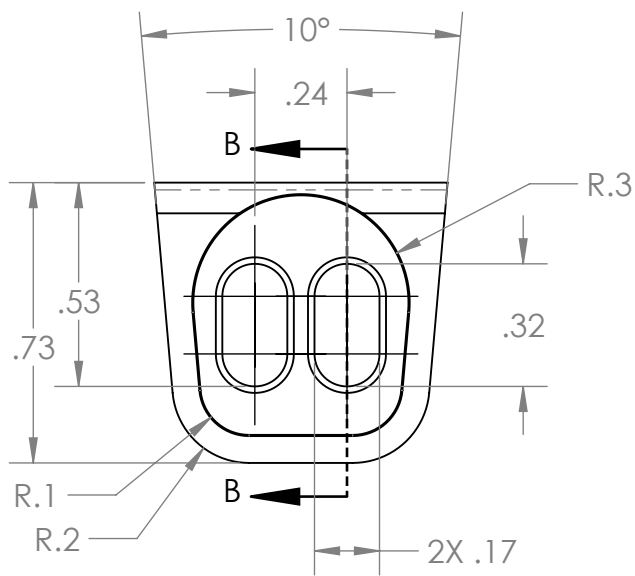
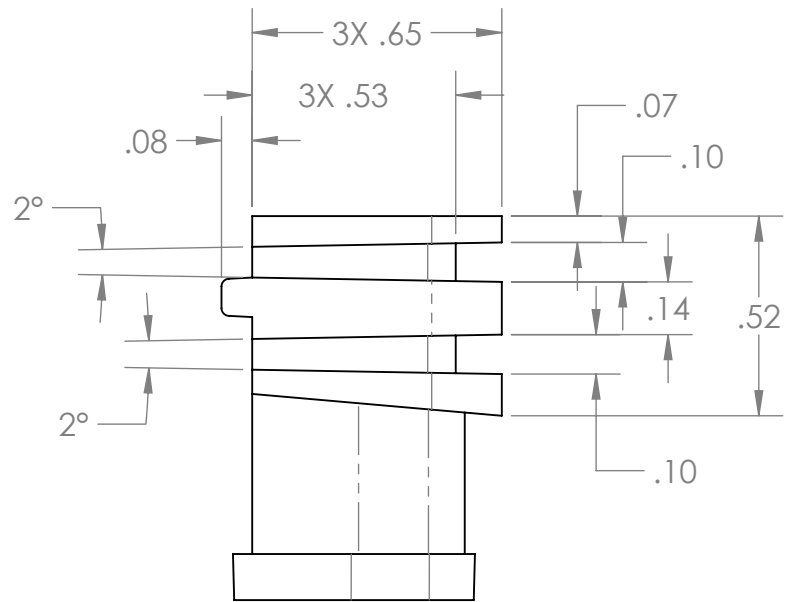
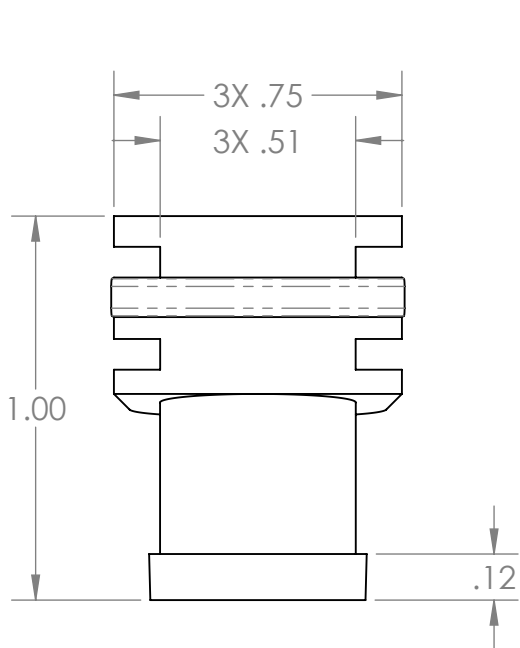
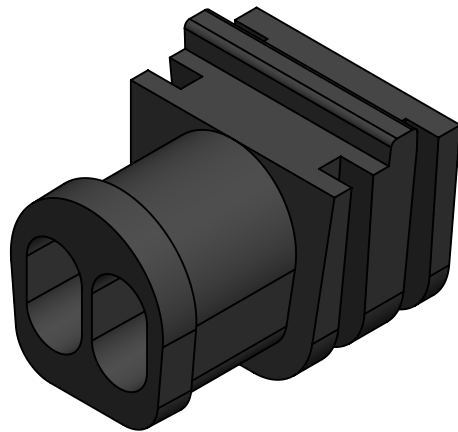


- NOTES:**
1. MATERIAL: EPDM, BLACK
 2. VOLUME: 0.208 CUBIC INCHES
 3. THIS IS A LIMITED DIMENSION DRAWING. MISSING DIMENSIONS ARE MODEL DRIVEN.
 4. PARTS TO BE ADEQUATELY PACKED TO PREVENT DAMAGE DURING SHIPPING.
 5. FLASH THICKNESS: .002" MAX. FLASH EXTENSION: .005" MAX. MISMATCH AT PARTING LINE: .002" MAX
 6. TOOLING DESIGN TO BE SUBMITTED TO AND APPROVED BY ENGINEERING PRIOR TO CONSTRUCTION OF TOOLS.
 7. SHARP EDGES AND CORNERS SHOWN TO BE UP TO .005" RADIUS.

REVISIONS					
ECO	REV.	DESCRIPTION	DATE	DRAWNBY	APPROVED
N/A	01	PRELIMINARY REVISION	6/5/2023	RG	
N/A	02	MATERIAL WAS CHANGED	6/28/2023	RG	
2025-21	03	INCREASE CABLE OPENING SIZE	1/29/2025	BA	FZ



SECTION B-B



(ISOMETRIC VIEW FOR REFERENCE)

PROPRIETARY AND CONFIDENTIAL
THE INFORMATION CONTAINED IN THIS DRAWING IS THE SOLE PROPERTY OF PRECISION FIBER. ANY REPRODUCTION IN PART OR AS A WHOLE WITHOUT THE WRITTEN PERMISSION OF PRECISION FIBER IS PROHIBITED.

DIMENSIONS IN PARENTHESIS ARE FOR REFERENCE ONLY. UNLESS OTHERWISE SPECIFIED:	
DIMENSIONS ARE IN INCHES	
TOLERANCES:	
FRACTIONAL $\pm 1/16$	
ANGULAR: MACH $\pm .5$ BEND ± 2	
ONE PLACE DECIMAL $\pm .050$	
TWO PLACE DECIMAL $\pm .020$	
THREE PLACE DECIMAL $\pm .010$	
INTERPRET GEOMETRIC TOLERANCING PER:	
MATERIAL	EPDM, BLACK
FINISH	
DO NOT SCALE DRAWING	

	NAME	DATE
DRAWN		
CHECKED		
ENG APPR.		
MFG APPR.		
Q.A.		
COMMENTS:		

PRECISION GROUP		
TITLE:		
GROMMET, DOUBLE FLAT CABLE		
SIZE	DWG. NO.	REV
B	PMG-000-0015	03
SCALE: 2:1		WEIGHT:
		SHEET 1 OF 1